

# Measuring Your Garage

## Design Services Measurement Guide



### Before Your Design Consultation

Provide us with the measurements of your space and a sketch of your floor plan, so our team of design experts can create the ultimate garage storage system for you.



---

#### Measure your space

We will walk you through the in-and-outs of how to measure your space properly, with diagrams, checklists and helpful tips to look out for.



---

#### Provide measurements

Fill out the provided measurement form with your measurements and send it back to us so we can get started with your layout.



---

#### Sketch your floor plan

Help us visualize your space by providing us with a rough sketch of your floorplan. This will help our team visualize your measurements.



# Why do we need your measurements?

Many projects have been derailed by a slight miscalculation in measuring. By taking accurate measurements, we will be able to maximize full-use of your space by designing storage solutions for your needs, and suited to your space.



## What we do for you

### Create an accurate floor plan of your space

After you provide us with all of your measurements, our design experts will create a spatially accurate floor plan of your exact space. This will allow our team to visually layout which storage solutions are best suited for you and your garage.

### Select products based on your needs

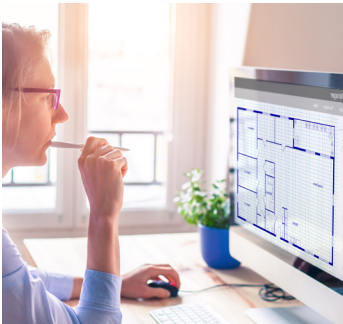
Having an accurate floor plan of your area now allows us to confidently suggest different combinations and sizes of products to fit your specific needs. We offer many different storage solutions and we want to ensure you are getting the most use out of your space.

### Account for technical challenges and limitations

Not all garages are built the same, we can help work around any technical challenges and limitations you may have within your garage.

#### This could include, but not limited too:

- Service points for plumbing and electrical
- Low ceiling height for overhead storage
- Concrete curbs, bumpers and alcoves
- Pillars and beams
- Garage door clearance
- Stairs, doors, and windows



# Things to keep in mind while measuring your space

Not every garage is built the same, and not every space will have the same use.

Below are some helpful tips to keep in mind while measuring your space. The more thorough your are with your measurements, the more precise our design team can get to creating your perfect garage.



## Leave space for your vehicle

Be aware of where you tend to park your vehicle in your garage. Is it closer to one side versus the other? How wide and how tall is your vehicle? Sports Cars, Trucks, and SUVs will typically be wider and taller than economy cars, sedans and regular pickup trucks. Add an **additional 5 to 6 feet width** so doors can easily open on either side.



## Opening cabinetry doors

Take into consideration the space around your cabinetry set while it's in use. Ensure there are no obstacles in the way of the cabinet doors while they are being opened. Our lockers need up to **40.5 in.** from the back of the cabinet for door clearance, while our wall and base cabinets require up to **32.5 in.**



## Different cabinet sizes

Bigger isn't always better but sometimes it's needed to store all your gear. Our **Pro Series** has a large footprint that accomodates bulky items. But what if you don't have a lot of space? Our **Bold Series** offers space-saving size for more compact areas, so you can get the most use out of your space, without taking up a large footprint.



## Tallest cabinet height

Don't let unused space go to waste, utlize above your lockers for extra storage. Lockers can require **76.75 in. to 84.75 in.** of height clearance, depending on the series. Measure your ceiling height to figure out how much vertical space you have for extra wall cabinets, overhead racks and/or shelving. Ensure you have enough clearance if you want to store boxes above your cabinets.



## Overhead joist spacing

If you're planning on installing Overhead Racks, it's important to measure the space between each ceiling joist to know whether your joist spacing is standard or irregular. We can accomodate a variety of joist spacing, but it determines which product is suitable for your space. Standard joist spacing is typically **16 in. to 24 in.** on center.



## Forgot to book a consultation?

No need to worry, here's how you can contact us for a **FREE** consultation with one of our award-winning Design Experts.

### Call us or visit our website



**1.877.306.8930**

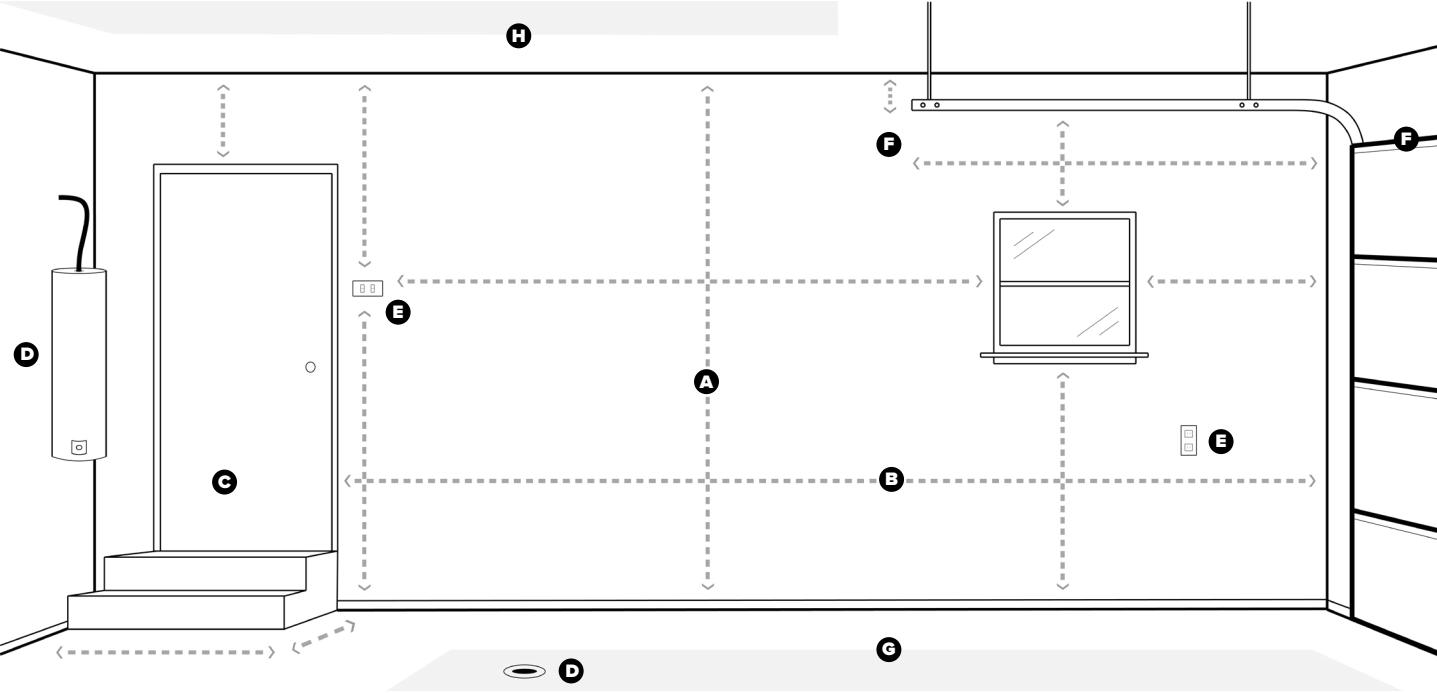


**[newageproducts.com/design-services](https://www.newageproducts.com/design-services)**

# How to measure your space

Don't fret if you have never done this before, we have provided a list and a form to help you record all your measurements for our design team.

Referring to the diagram below, take height and width measurements of your full wall(s). Don't forget sections between windows, rough-ins, garage doors, curbs, baseboards, and service points. Utilize the "What to measure list" to ensure you have measured everything in your space.



## What to measure list

- A. Height of wall from floor to ceiling.**
  - Not all garage floors are leveled, if you have a slope, measure the height from one end of the wall, and measure the height of the other end. We can then determine how much slope to accomodate for.
  - Take note if you have any curbs, bumpers or baseboards that may limit your storage setup.
  - Include any windows by measuring the height from floor to window frame - window frame to ceiling.
- B. Width of wall from one side to the other.**
  - Include any windows by measuring the width from wall to window frame - window frame to other wall end.
- C. Width and height of any doors or stairs.**
- D. Location of any service points for plumbing**
  - Includes any water heaters, sink connections, water drains, etc.
- E. Location of any service points for electrical**
  - Include any electrical outlets, circuit breakers, and electrical panels.
- F. Width and height of garage door**
- G. Car measurements**
  - Include your vehicals year - make - model and we can determine its size for your space.
- H. Length and width of your ceiling space**

# Record your measurements

Using the diagram and list on your left (page 4), record all your measurements below. Once filled-out, please send this form back to us before your consultation.

Wall 1 Dimensions

Refer to sections A through E on the "What to measure list".

Width	Height	Additional measurements	Refer to sections C through E on the "What to measure list".
-------	--------	-------------------------	--

Wall 2 Dimensions

Refer to sections A through E on the "What to measure list".

Width	Height	Additional measurements	Refer to sections C through E on the "What to measure list".
-------	--------	-------------------------	--

Wall 3 Dimensions

Refer to sections A through E on the "What to measure list".

Width	Height	Additional measurements	Refer to sections C through E on the "What to measure list".
-------	--------	-------------------------	--

Wall 4 Dimensions

Refer to sections A through E on the "What to measure list".

Width	Height	Additional measurements	Refer to sections C through E on the "What to measure list".
-------	--------	-------------------------	--

## What types of storage needs do you have

Select any of the below that may apply to you.

Large Item Storage	Workspace Solutions	Tool Storage
Slatwall and Wall Organization	Overhead Rack Solutions	Mobile Storage
Garage Cabinetry	Shelving Solutions	Garage Flooring

# Record your measurements (cont.)

Using the diagram and list on page 4, record all your measurements below.  
**Once filled-out, please send this form back to us before your consultation.**

Garage Door Dimensions

Refer to Section F on the “What to measure” list.

Garage Door 1 - Width x Height	Track Height - Off floor x To ceiling	Track Length
Garage Door 2 - Width x Height	Track Height - Off floor x To ceiling	Track Length

Vehicle Dimensions

Refer to Section G on the “What to measure” list.

\*Only necessary if you intend to park your car in the garage.

Vehical 1 - Manufacturer	Vehical 1 - Model	Vehical 1 - Year
Vehical 2 - Manufacturer	Vehical 2 - Model	Vehical 2 - Year

Ceiling Dimensions

Refer to Section H on the “What to measure” list.

\*Only necessary for overhead storage solutions.

Ceiling - Length x Width	Ceiling - Height clearance	Additional Measurements
--------------------------	----------------------------	-------------------------

Additional Measurements

<div></div>	Depth	Height
Width		
<div></div>	Depth	Height
Width		

# Sketch your layout with measurements

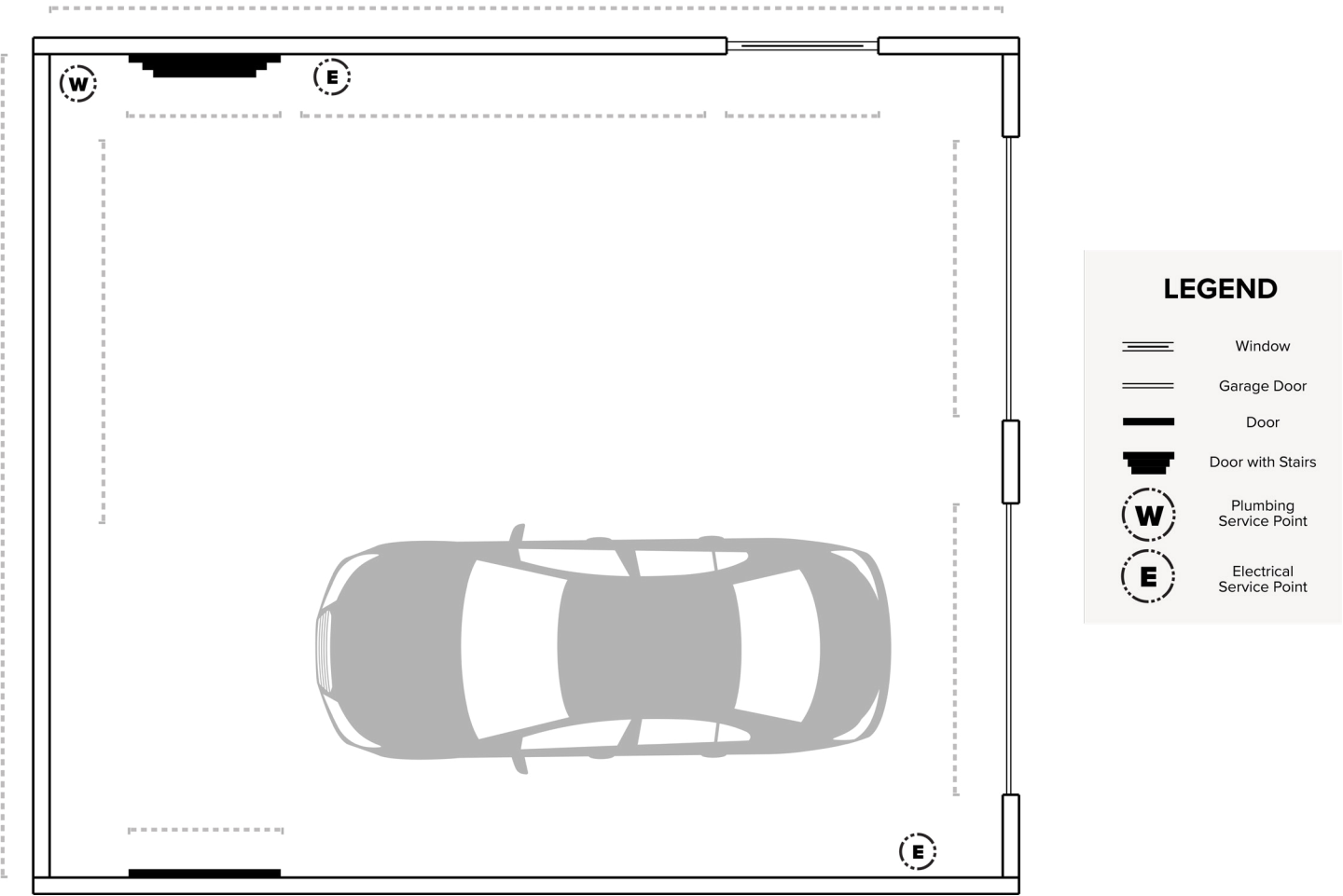
Save time and frustration by sketching out your measurements and show your work. This will help to ensure your measurements are accurate and/or if any errors have ocured.

Having a top-down, visual layout of your space will help our designers determine which cabinets best suit you and your needs.

Check out our example below.

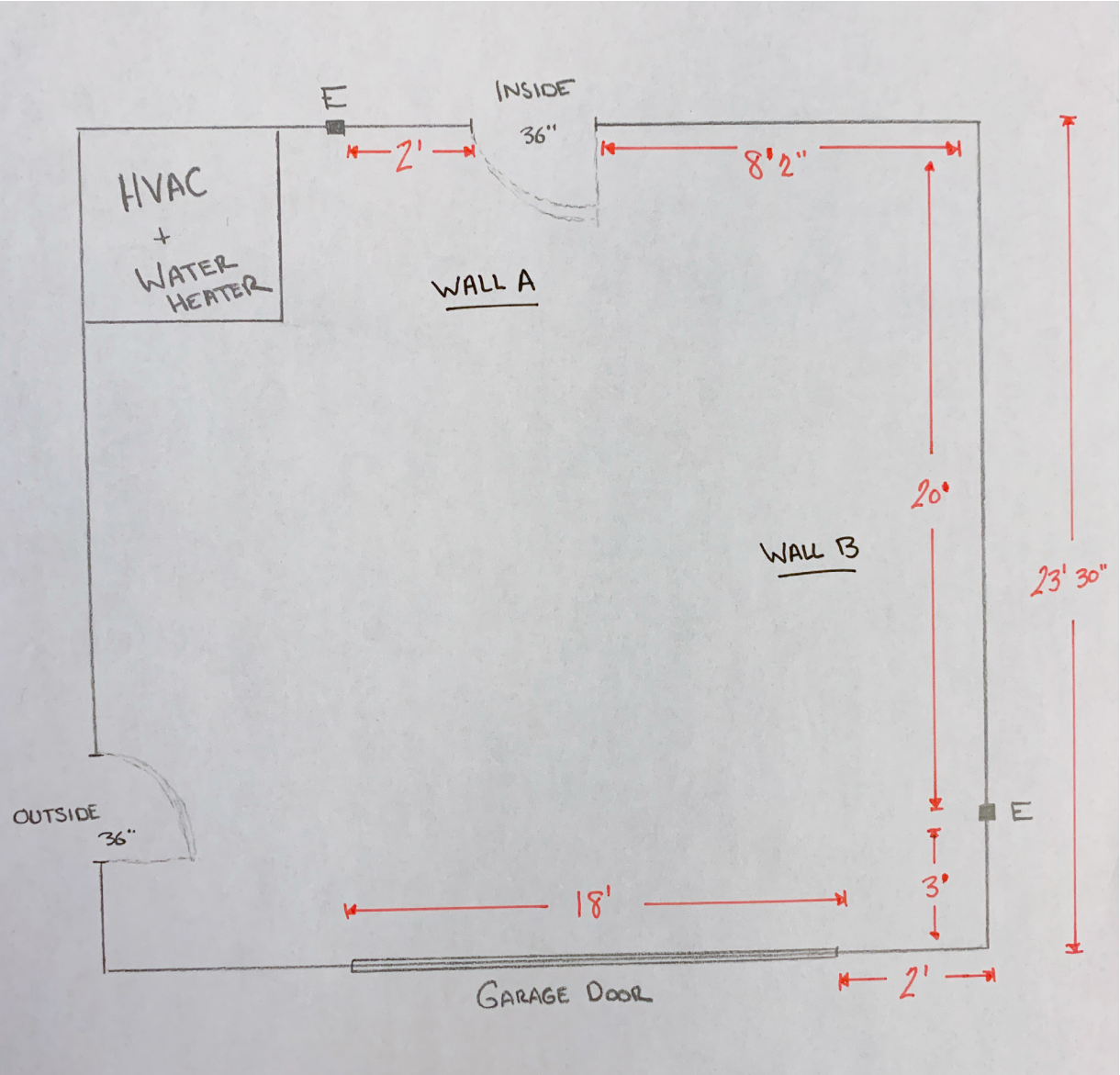
**Don’t worry if you’re not an artist,** a basic line drawing with measurements is all we need. Start drawing an outline of the perimeter length of your space. Then add-in any obscurities and important measurements, we’ll take it from there!

**Include a legend.** Each garage is built differently, when you sketch your layout, include a legend with symbols for any challenges and limitations that your garage may have. This will make it easier for our design team to understand what you have drawn.





## Example of customer sketch



## Send us your measurements

1. Fill out the Measurement Form on *pages 5 - 6* and re-save this guide as a copy pdf.
2. Attach a photo, or scan of the sketch of your space, with measurements.
3. Send us your sketch, measurements and form to our design team [here](#) or email us at [info@newageproducts.com](mailto:info@newageproducts.com).  
In your email, please specify your Full Name and your Date and Time of your design consultation.

### Have photos of your space?

All is welcome! Take any pictures you may have of your space and send them to our design team with your Measurement Form and Sketch of your layout. This will help our team visualize your space more thoroughly prior your consultation.

